

This guide shows you how to connect your IP CONNECT unit using TCP/IP networking

The IP CONNECT unit can be connected directly to the PC (LAN socket) or remotely over a Local Area Network (LAN) and can then be accessed by a standard Web Browser such as Windows Internet Explorer.

The simple web browser allows a user to view and change the module configurations and also to perform some control functions with status updates.

STEP 1. Connect Devices

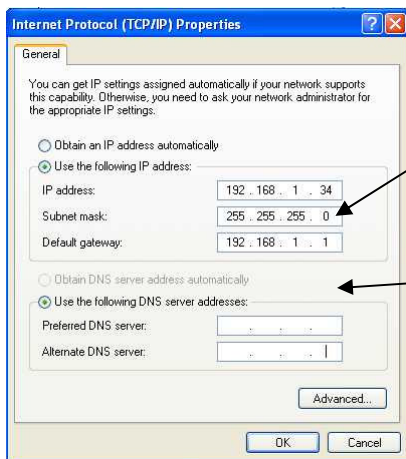
Connect the LAN Connection (RJ45) port of the IP CONNECT module to the LAN port of the PC
Plug in Connect appliances if available.

STEP 2. Check Network Settings in the PC

This is done in Windows XP by opening the "Control Panel \ Network Connections".
Then select the "LAN Connection" and Right Click to view "Properties".
Then select "Internet Protocol (TCP/IP)" and view "Properties"

The following Window will be shown:

Make a note of the values as these may need to be changed back afterwards



Only the IP Address and Subnet Mask needs to be changed as shown

The first 3 numbers (eg 192.168.1) of the IP address must match those of the IP Connect Unit.

The last number (eg 34) must be different

The subnet mask must match those of the IP CONNECT module (255.255.255.0)

Once the changes are made select OK to save it.

STEP 3. Power-up the IP CONNECT Module and connected "Connect Appliances"

STEP 4. Run the Web Browser – eg Windows Internet Explorer

Type the IP Address for the IP CONNECT unit "<http://192.168.1.253>" into the browser's address bar at the top LHS of the Window.

The following Opening Login screen will then be shown

STEP 5. Enter the User Name and Password

The factory defaults are:

User Name: Admin

Password: Connect

Press Login button.

You will now have the "Direct Control" screen displayed.



NOTE: Resetting to default settings

To reset a unit to default settings:

Power-up with the small switch on side of the module pressed, and then release after a few seconds.

The defaults settings are:-

IP Address = 192.168.1.253

Subnet Mask = 255.255.255.0

Gateway = 192.168.1.1

User Name = Admin

Password = Connect

*** Required settings must be re-saved, otherwise the unit will revert to previous settings after next power reset.

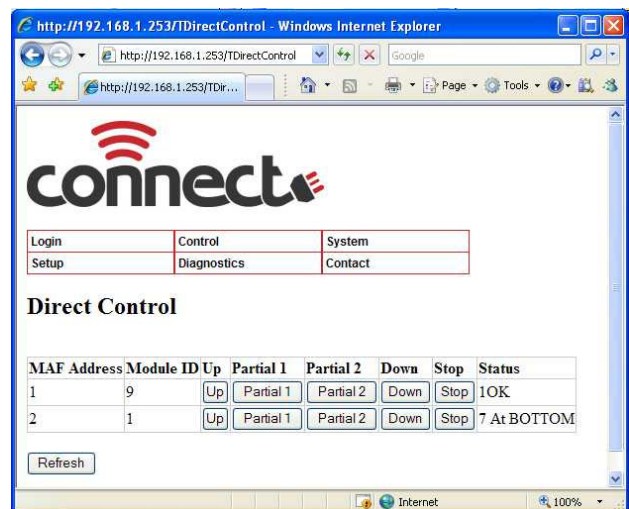
STEP 6. Verify CONNECT Network Operation

With one Connect Module attached and the "Direct Control" screen shown:

Wait a minute for the Connect network to be initialized. Clicking the "Refresh" button refreshes the screen.

The first line in the table is the IP Connect module itself. Then there is one line per connected appliance.

The up, down and stop buttons will work for any connected appliance.



STEP 7. Change LAN settings

To change the LAN settings for the IP CONNECT unit, select the "Setup" and then "IP Setup" menu.

This displays the current values for IP Address, Subnet Mask and Gateway IP Address. These values may be changed and then select the Update button to update and save the new values.

Note – the changes will only take effect when the Reboot button is selected or the power is cycled.

Should you have any questions regarding the installation of our projection screens please call our technical sales desk on +61 2 4869 2100 for assistance.

