

AV Plasma Lifter • Swing Down



Not enough space to install a Plasma Lift vertically in the ceiling? Why not install it horizontally and watch it swing down into position ready for use!

Providing a unique solution to limited space situations, the Swing Down Interfit Plasma Screen Lifter is designed using a single integrated box design with ceiling edge cover strips and fitted MDF door for a simple, modular single trade installation.

Adjustable to swing up to 20 degrees past the vertical plane, the Swing Down Interfit Plasma Screen Lifter ensures Plasma visibility for the viewing audience from boardroom to bedroom. Interfit's featured gearbox fail-safe mechanism protects the installer and end users alike – don't depend upon a cable for your safety – use Interfit!

BENEFITS

- Mechanical Lifting Arms
- Fail-Safe Assured
- Simple Single Trade Installation

APPLICATIONS

- Home Theatre
- Boardroom Presentation
- Educational Facilities

PRODUCT FEATURES

Description: Horizontally Mounted Swing Down Lifting Devices for Flat Panel Monitors.

Construction: Aluminium & Steel Construction Utilising a Gearbox and Gas Strut Lever Arm System.

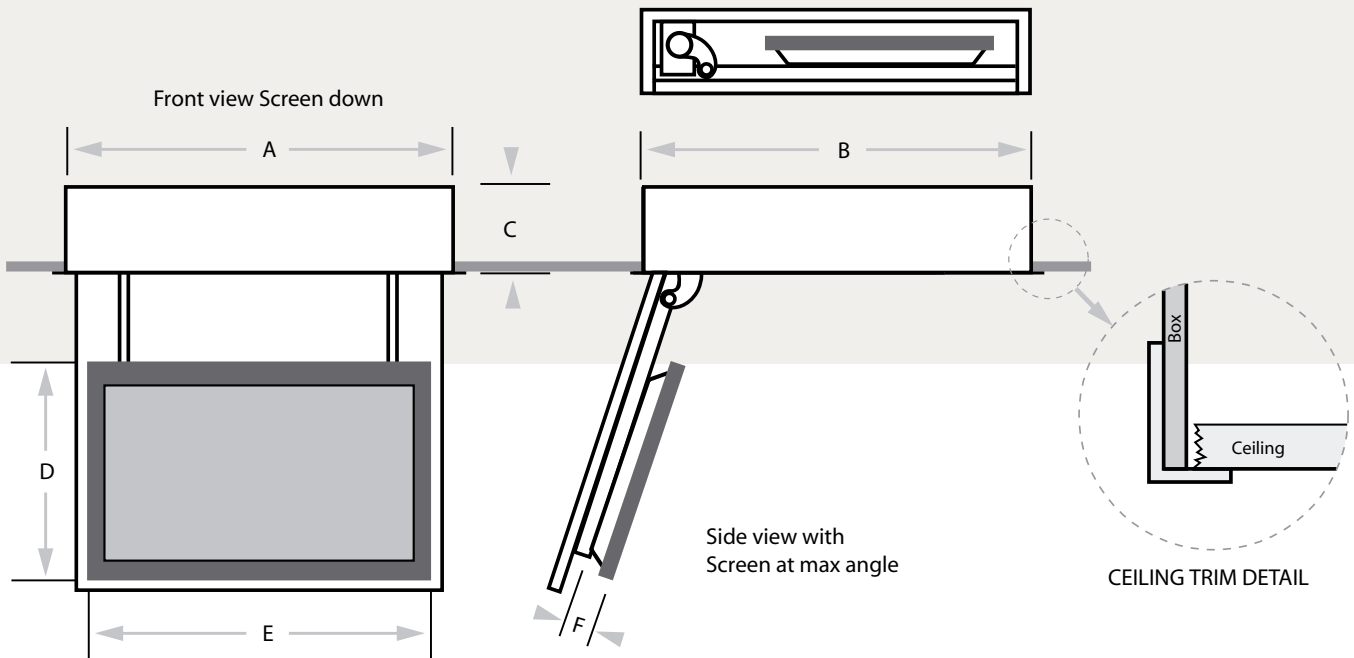
Features: Integrated door opening solution with Ceiling Edge Cover Strips.

Installation: One piece unit, utilising nutserts for 'L' Brackets.

Sizes: 5 sizes available.

Gearbox mechanism provides smooth operation and complete safety!





Item No	Unit Dimensions			Max Panel Dimensions			Panel Size Guide (only)	Unit Weight	Lifting Capacity
	A	B	C	E	F	D			
1481000	1120	1150	310	1000	145	652	32" to 37" Diagonal	90kg	45kg
1481150	1270	1260	310	1150	145	760	40" to 42" Diagonal	100kg	50kg
1481300	1420	1360	310	1300	145	860	42" to 50" Diagonal	115kg	55kg
1481450	1570	1400	310	1450	145	900	50" to 55" Diagonal	130kg	55kg
1481600	1720	1500	310	1600	145	1000	55" plus Diagonal	145kg	55kg

Full technical drawings and installation instructions can be found on our web site.

